

Driving Commerce. Creating Opportunity. Bolstering the Region.

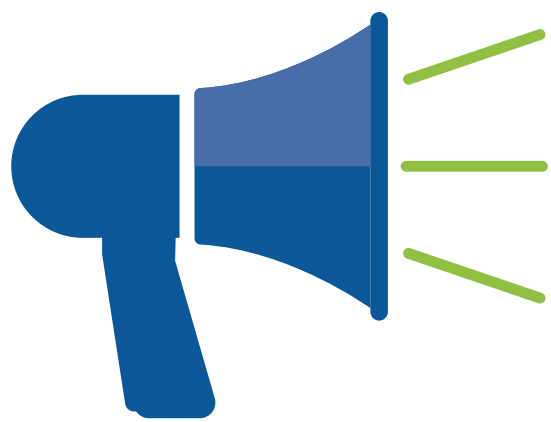
Annual Economic Impact Snapshot

10 ORGANIZATIONS

Chestnut Hill Business District
Chestnut Hill College
Chestnut Hill Conservancy

Chestnut Hill Hospital
Friends of the Wissahickon
Morris Arboretum
Norwood-Fontbonne Academy

Philadelphia Cricket Club
Springside Chestnut Hill Academy
Woodmere Art Museum



TOGETHER CREATE

3,480

JOB

WITH

\$182.1 million

IN TOTAL EARNINGS

(Salary & Benefits)



GENERATING

\$6.1 MILLION

IN TAX REVENUES FOR
THE CITY OF PHILADELPHIA

AND

\$9.8 million

IN TAX REVENUES FOR
THE COMMONWEALTH OF PENNSYLVANIA

GENERATING

\$482 million

IN TOTAL ANNUAL ECONOMIC IMPACT
ACROSS 4 CATEGORIES

- Operations: **\$360 million**
- Capital Investments: **\$32.4 million**
- Visitor Spending: **\$40.5 million**
- Property Value: **\$49.1 million**

WITHIN THE

5 COUNTY GREATER PHILADELPHIA REGION

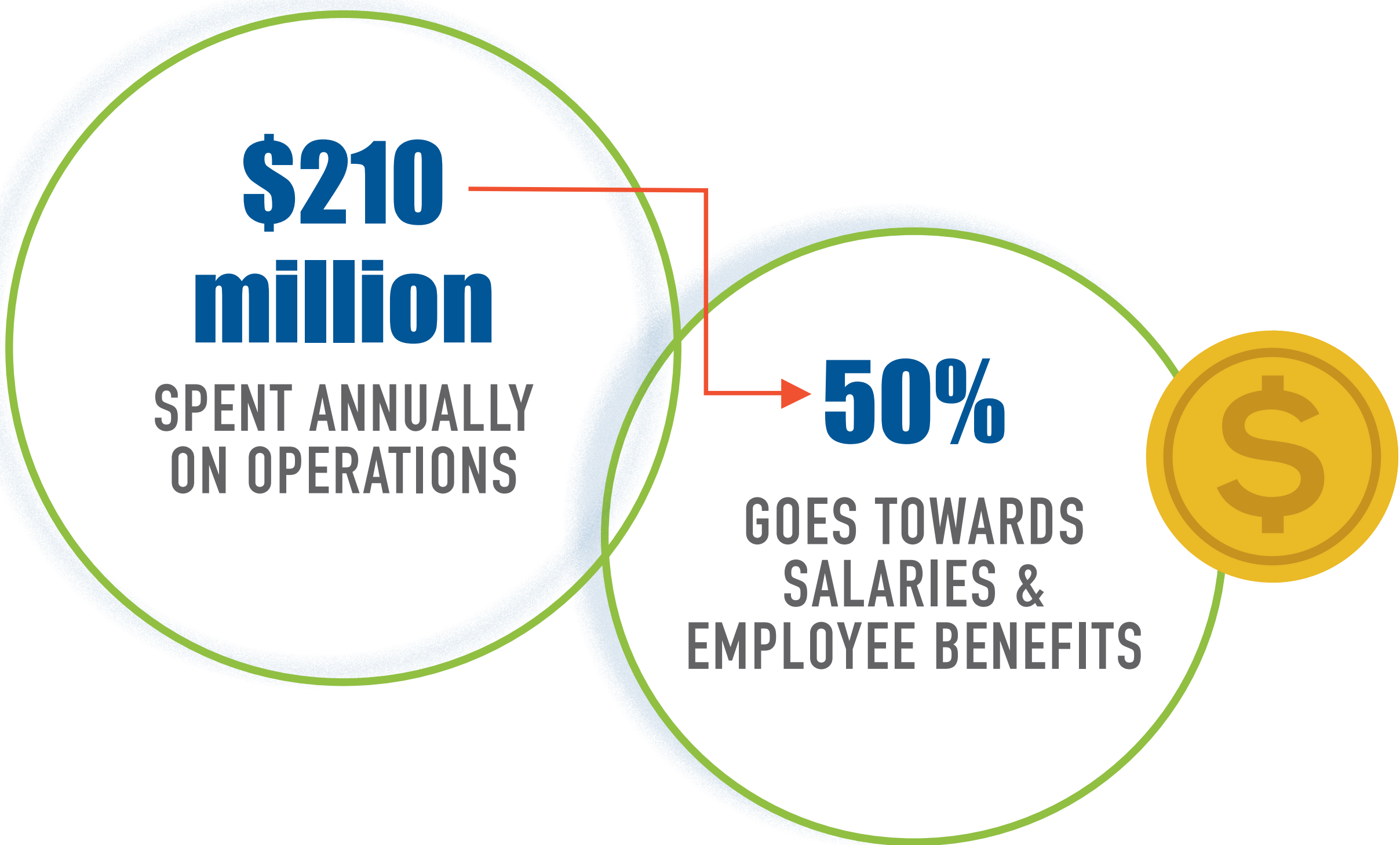
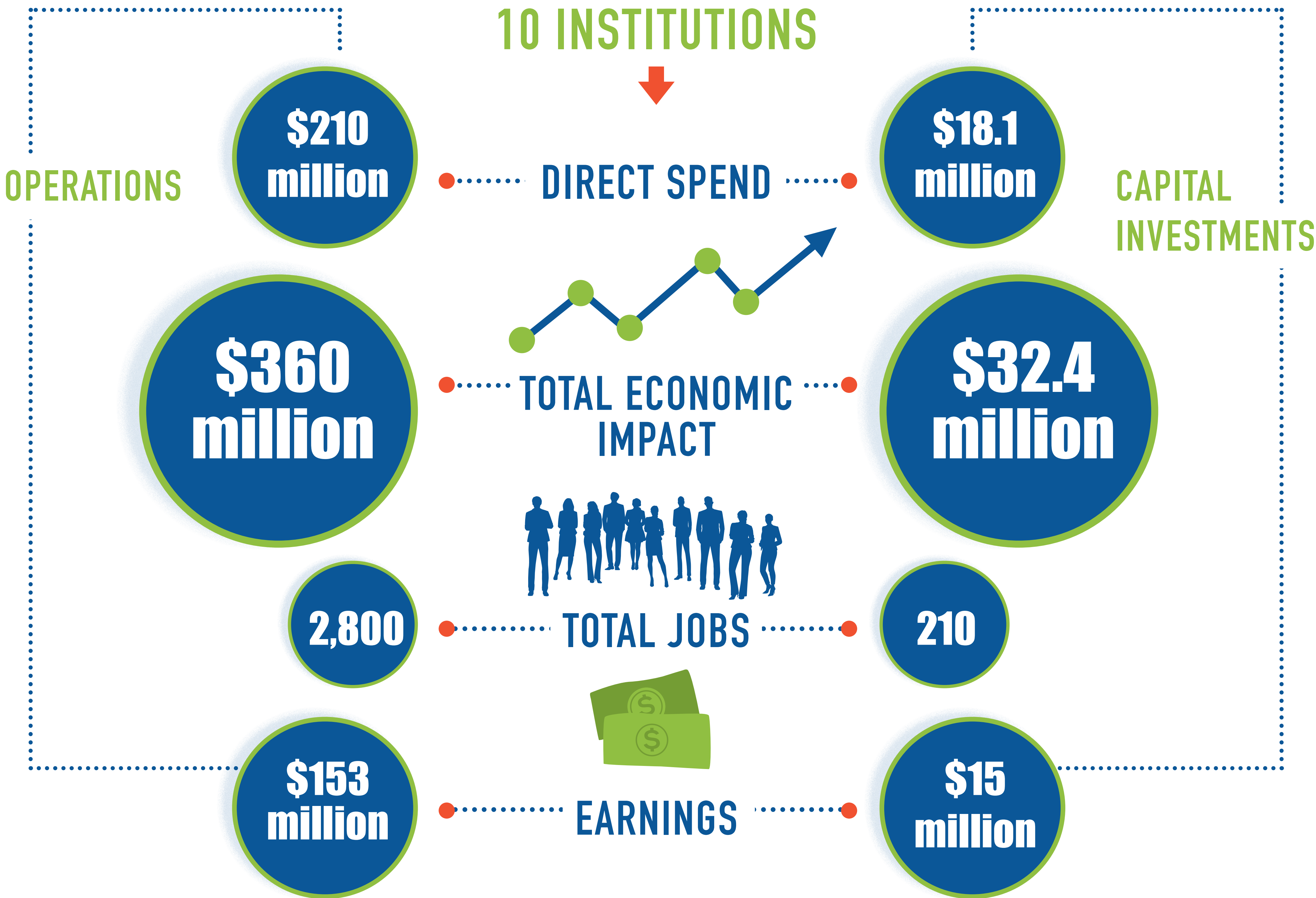


AND TOGETHER INCREASE

PROPERTY VALUES, COMMUNITY SERVICES,
CULTURAL & EDUCATIONAL OPPORTUNITIES

Foundations of Economic Vitality.

The Economic Impact of Operational Expenditures & Capital Investments



Placemaking at Work.

Economic Impact from Students & Visitors

STUDENTS & VISITORS
SPEND ANNUALLY
\$27.1 million



AVERAGE VISITOR
SPEND PER DAY
\$85

UNIQUE VISITORS
317,000+

to Chestnut Hill Institutional Leader
Organizations & the Chestnut Hill Community



310,000
RECREATIONAL
VISITORS



5,600
(OUT OF TOWN)
HOSPITAL PATIENTS,
PATIENT VISITORS &
EVENT ATTENDEES



1,800
HIGHER EDUCATION
STUDENTS

390 JOBS WITH **\$14.1 million** IN TOTAL EARNINGS
GENERATING **\$40.5 million** WORTH OF ECONOMIC IMPACT



**2,600 ACRES OF GREEN SPACE
& CULTURAL AMENITIES**



Member institutions provide access to quality of life resources.

FRIENDS OF THE WISSAHICKON
maintains **1,800 acres** that make up Wissahickon Valley Park.

PHILADELPHIA CRICKET CLUB
maintains **40 acres** of protected green space.

MORRIS ARBORETUM
encompasses an additional **75 acres** (in addition to the
public garden) of open, uncultivated space that includes
educational facilities.

NORWOOD-FONTBONNE ACADEMY
maintains **14 acres** of protected green space,
available to other schools and organizations.

CHESTNUT HILL COLLEGE
occupies a **75 acre** campus including **10 acres** of preserved
green space.

WOODMERE ART MUSEUM
offers **6 acres** of protected space that are fully
accessible to the public.

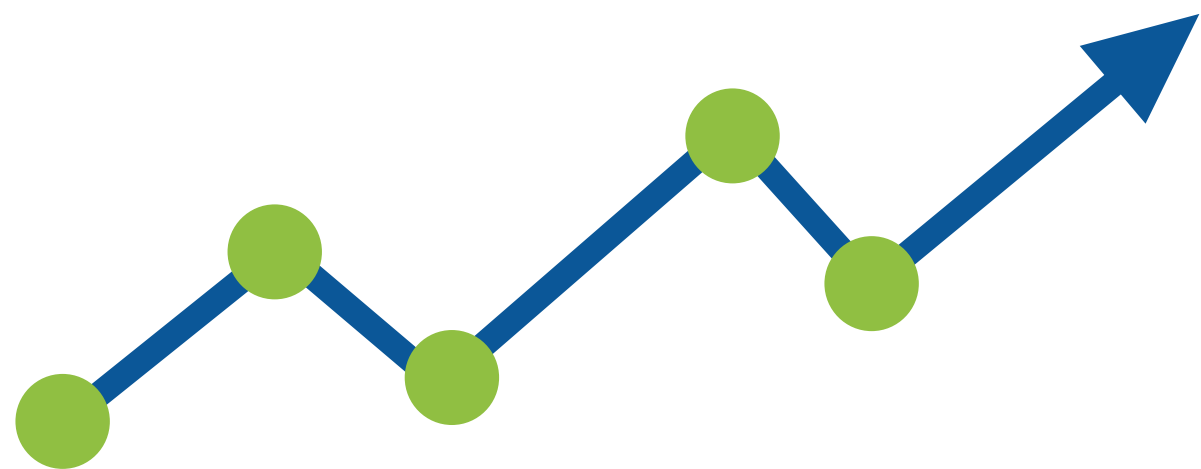
Community Investment

Economic Impact From Property Value & Public Services

THE INCREASED PROPERTY VALUE

Within one half mile of the 10 institutions
Generates a Total of

\$49.1 million
IN ANNUAL ECONOMIC IMPACT



RESIDENTIAL REAL ESTATE IN CHESTNUT HILL

3,600

OCCUPIED HOMES

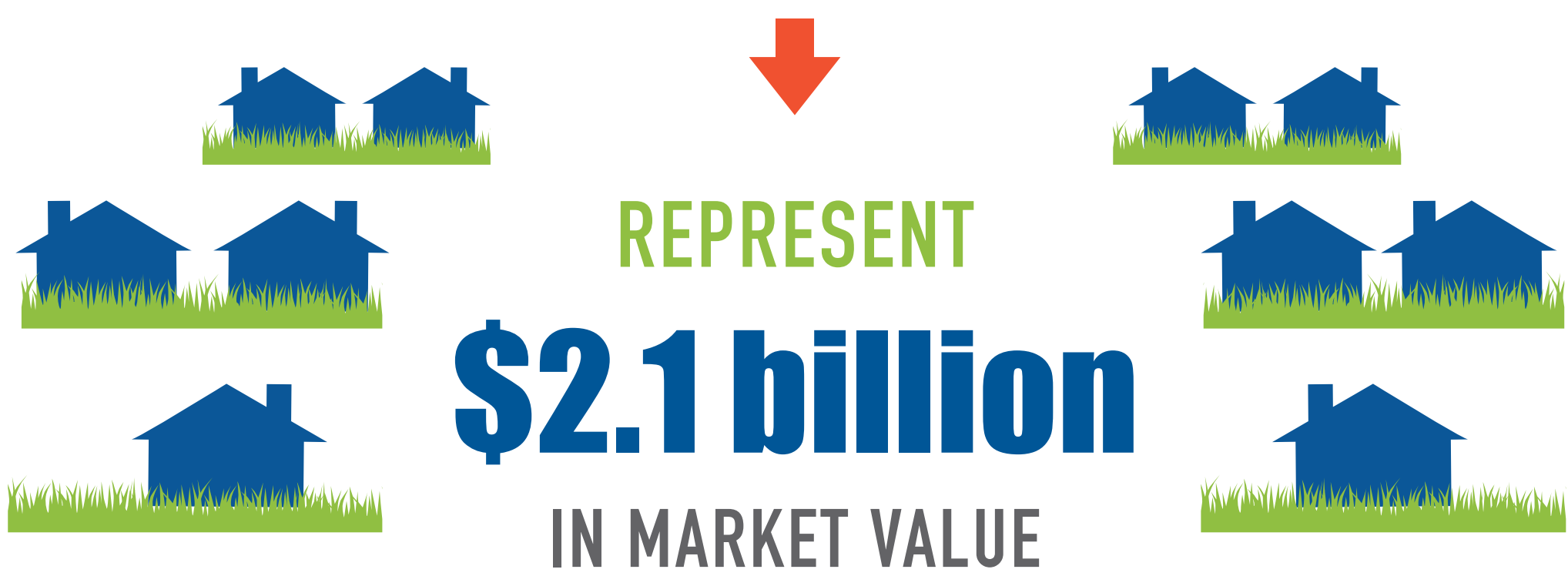
\$556,000

AVERAGE HOME PRICE

HOMES IN CHESTNUT HILL SELL FOR

136%

MORE THAN CITY OF PHILADELPHIA
AVERAGE HOMES



BONUS

CHESTNUT HILL INSTITUTIONAL LEADERS
ALSO PROVIDE

\$23+ million

IN STUDENT FINANCIAL AID AWARDED



CHESTNUT
HILL
COLLEGE

\$15.5 million



\$200,000

Much of this aid is funded by
alumni donations from a base
that may no longer live in the
region – representing a transfer
of funds from outside the region
in to Chestnut Hill.

SPRINGSIDE
CHESTNUT HILL
ACADEMY

\$8.2 million



\$19 million

IN CHARITABLE
HEALTHCARE GIVEN



2,000

COMMUNITY SERVICE HOURS
Connected to Leader
Organizations



200+



YEAR-ROUND CULTURAL/EDUCATIONAL PROGRAMS
(classes, camps, etc.) Offered by Leader Organizations,
Including: Growing Minds at Morris Arboretum and
Philartdelphia at Woodmere Art Museum.

ECONOMIC IMPACT ATTRIBUTED TO
THIS CATEGORY YIELDS



\$310,000

FOR THE CITY OF
PHILADELPHIA



\$377,000

FOR THE SCHOOL DISTRICT
OF PHILADELPHIA
(Income, Sales, Business, Property)